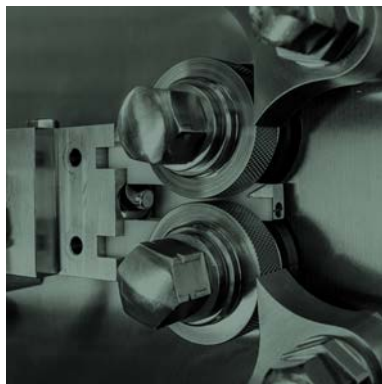
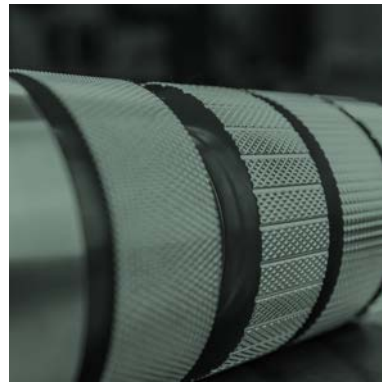


# Alexanderwerk



THE COMPACTION PEOPLE



## Tradition Meets Technological Leadership

### 140 Years of Innovation “Made in Remscheid”

Alexander von der Nahmer established the Alexanderwerk in Remscheid as a foundry in 1885. Alexanderwerk quickly evolved from a manufacturer of mechanical meat grinders into a versatile engineering company for household and commercial kitchen equipment. Already by the end of the 19th century, the company was listed on the stock exchange – a clear sign of innovation and forward-thinking.

With its entry into the pharmaceutical and chemical industries in the 1930s, a new era began: the development of specialized machines for compaction and granulation became the company’s core business. The in-house technical center – now a cornerstone of research – had its origins here.

To this day, Alexanderwerk continuously invests in expanding its technologies, production facilities and global presence – including subsidiaries in the US, China and India.

#### **Remscheid Headquarters – The Heart of Our Company**

At our headquarters in the "Bergisches Land" region, we unite development, manufacturing, service and application engineering under one roof. Alexanderwerk is not only one of the leading employers in the region, but also a trusted global partner for companies with the highest demands on precision and efficiency.

- Certified quality: ISO 9001-compliant, GMP-compliant, with validatable processes
- Global presence: In-house technical centers in Germany, the US and China for direct customer support
- Long-term partnerships: Personal guidance through all phases – from initial idea to after-sales service



## Responsibility That Delivers Results

Technological excellence and responsible action are not mutually exclusive – on the contrary: at Alexanderwerk, they go hand in hand. As a globally operating mechanical engineering company with 140 years of experience, we see it as our duty not only to develop high-performance solutions, but to implement them within a framework of sustainable and responsible value creation.

Our focus is on developing and manufacturing machines and systems that meet the highest standards of quality, precision and efficiency – while also being energy-efficient, resource-conserving and durable. We believe that sustainable technology is not only a social obligation, but also creates genuine economic value.

Equally important is the way we collaborate with customers, partners and employees: respectfully, solution-oriented and with a long-term perspective. Because innovation doesn't happen in isolation – it arises through cooperation, openness and reliability.

This brochure provides a comprehensive insight into our applications, products and services – and shows why Alexanderwerk has earned the trust of leading companies in the pharmaceutical, chemical and food industries for decades.

We warmly invite you to get to know us and our technologies – as a potential customer, partner or collaborator.



Bekim Bunjaku (CEO) & Manfred Felder (Managing Director)

## For Industries That Rely on Precision

Alexanderwerk develops specialized solutions for dry granulation in three demanding industries – always tailored to industry-specific requirements:

### Pharmaceutical and Life Science Industries

Around 75% of all pharmaceutical products are administered as tablets or capsules – solid forms with active ingredients and excipients. Granulation is ideally suited for gentle and economical processing: it modifies only the physical properties (e.g., dispersibility and solubility), not the chemical composition. Ideal for tablets, capsules, vitamins, flavorings, instant powders and sweeteners.

### Chemical Industry and civil Nuclear Technology

The chemical industry processes mostly solid raw materials, which in powder form are often unsuitable for further processing. Through compaction and granulation, key physical properties such as particle size, bulk density, flowability and density are optimized. This results in marketable granules or intermediates for textile dyes, battery materials, salts, fertilizers, silica and additives.

### Food Industry

The food processing industry is also increasingly demanding efficient production and processing of raw materials.

Alexanderwerk meets this challenge by aligning individual company needs with standardized food industry requirements (e.g., for flavorings, instant powders and sweeteners).

In general Alexanderwerk takes care about any powdery material and will find a solution for processing.





## Roller Compactors for Maximum Requirements – Compact and Precise

Our cantilevered roller compactors are specifically designed to meet the special needs of the pharmaceutical industry. They combine a compact design with maximum process control – ideal for research, development and production. Most machines are available in ATEX, with WIP, with batch control, 21 CFR Part 11, etc.

### BT 50 Pharma

Precision meets efficiency – with our latest innovation, the compact and highly functional BT 50 Benchtop Roller Compactor. Specifically designed for handling smallest quantities of raw materials within the pharmaceutical sphere. Solely focused on producing flakes.

- Cantilever Benchtop Roller Compactor
- Compaction can be combined with our gentle stand-alone Rotor Fine Granulators



### BT 120 Pharma

Developed specifically for research and development. Ideal for the production of flakes and for compacting active ingredients in small batches. Provides a practical solution for early galenic development – compact, flexible and easy to use.

- Compact design, without crushing system
- Easy disassembly due to cantilevered design
- Integrated control system for mobile use
- Scalable process parameters for larger systems



Model	BT 50 Pharma	BT 120 Pharma
Roller diameter	50 mm	120 mm
Roller width	15 mm	25 mm
Continuous throughput capacity	up to 2 kg/h (lactose)	up to 8 kg/h (lactose)
Maximum compacting force	7,5 kN/cm	20 kN/cm
Maximum roller gap	2 mm	4 mm
Maximum roller speed	14 rpm	12 rpm
Weight (including control system)	160 kg	425 kg
Dimensions (H x W x D)	550 mm x 652 mm x 777 mm	620 mm x 890 mm x 990 mm

**WP 120 Pharma – also available as OEB 4 and OEB 5**

Designed for R&D and meets the highest requirements on a pilot scale. Processes small amounts from 1 g up to 50 kg/h (lactose) – under consistent, reproducible conditions. Ideal for demanding products, small batches and early production stages.

- Easy disassembly thanks to cantilevered design
- Integrated control system for mobile use
- Process data transferable to larger systems



Model	WP 120 Pharma
Roller diameter	120 mm
Roller width	25 mm / 40 mm
Continuous throughput capacity	up to 50 kg/h (lactose)
Minimum product quantity	1 g (micro batch – optional)
Maximum compacting force	18 kN/cm
Maximum roller gap	4 mm
Maximum roller speed	13 rpm
Weight (including control system)	825 kg
Dimensions (H x W x D)	1.635 mm x 1.490 mm x 967 mm



**WP 150 Pharma**

Combines high throughput with modern design. Thanks to its integrated sealing system, it is ideal for compacting and granulating highly potent substances – both in development and production.

- Optimized design for high-potency compounds
- Tool-free cleaning via cantilevered design

Roller diameter	150 mm
Roller width	50 mm
Continuous throughput capacity	up to 250 kg/h (lactose)
Maximum compacting force	20 kN/cm
Maximum roller gap	5 mm
Maximum roller speed	40 rpm
Weight (including control cabinet)	2.200 kg
Control cabinet weight	500 kg
Dimensions (H x W x D)	2.100 mm x 2.400 mm x 1.455 mm
Control cabinet dimensions (H x W x D)	2.180 mm x 1.910 mm x 650 mm

## WP 200 Pharma – also available as OEB 4 and OEB 5

Designed for pharmaceutical production. Suitable for processing changing products, as well as for continuous operation under the highest demands.

- Easy cleaning via cantilevered design
- Compact design with external control cabinet



Model	WP 200 Pharma
Roller diameter	200 mm
Roller width	75 mm
Continuous throughput capacity	up to 500 kg/h (lactose)
Maximum compacting force	20 kN/cm
Maximum roller gap	5 mm
Maximum roller speed	38 rpm
Weight (including control cabinet)	2.650 kg
Control cabinet weight	500 kg
Dimensions (H x W x D)	2.150 mm x 2.400 mm x 1.700 mm
Control cabinet dimensions (H x W x D)	2.180 mm x 1.910 mm x 600 mm



## ALX300

Responding to industry's demand for higher throughput rates and streamlined processes, we proudly present our large-format Cantilever Roller Compactor ALX300.

- Compacting Force: up to 30 kN/cm
- Modular Cantilever Roller Compactor
- Compatible with our Rotor Fine Granulators

Roller diameter	300 mm
Roller width	100 mm
Continuous throughput capacity	up to 1.000 kg/h (lactose)
Maximum compacting force	up to 30 kN/ cm
Maximum roller gap	up to 8 mm
Maximum roller speed	40 rpm
Weight (including control cabinet)	4.600 kg
Control cabinet weight	800 kg
Dimensions (H x W x D)	2.800 mm x 3.150 mm x 2.100 mm
Control cabinet dimensions (H x W x D)	2.100 mm x 1.870 mm x 655 mm

## Powerful Systems for Demanding Processes

When high compacting forces, stability and long operating times are crucial, our roller compactors with bearings on both sides are the right choice. Developed for the chemical industry, they offer flexible applications and maximum robustness in continuous operation.

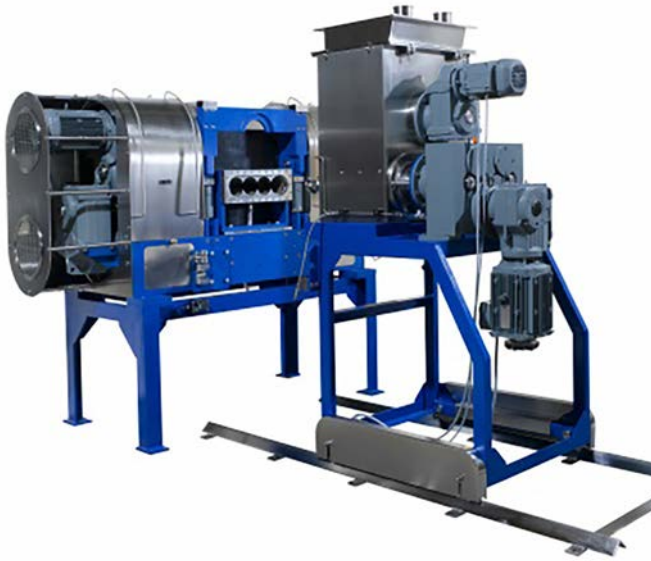
### PP 150 C

Our smallest roller compactor for use in the chemical and fine chemical industries. Suitable for research, development, pilot plants and production. The robust design with double-sided roll mounting ensures stable processes and versatile applications.



- Modular design for flexible configurations
- Control system and technical equipment on board
- Process data transferable to larger PP models

Roller diameter	150 mm
Roller width	75 mm
Continuous throughput capacity	up to 400 kg/h (lactose)
Maximum compacting force	30 kN/cm
Maximum roller gap	5 mm
Maximum roller speed	36 rpm
Weight (without RFG's)	1.500 kg
Dimensions (H x W x D)	2.160 mm x 1.750 mm x 2.000 mm
Control system	external control cabinet



## PP 250

The ideal roller compactor for high-volume applications in the chemical industry. Offers a reliable and economical solution for the continuous compaction of a wide range of raw materials.



## PP 350

High-performance model of the PP series for applications with the highest throughput requirements. Ideally suited for continuous compaction of large product quantities. The robust design with double-sided roll mounting enables high press force and ensures maximum process stability.

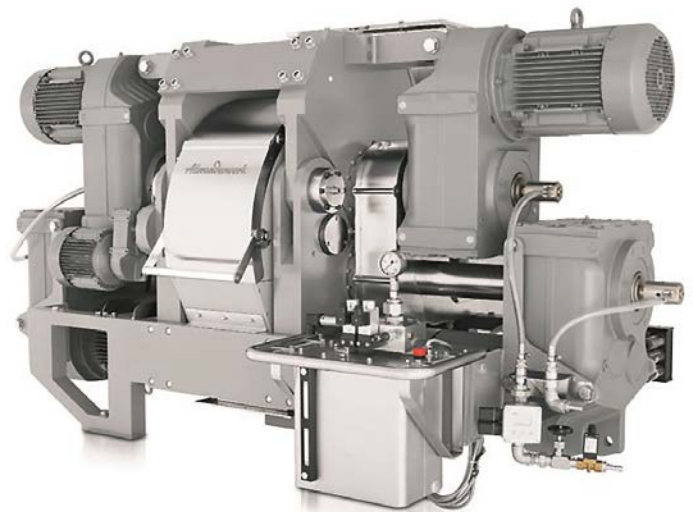
## PP 500

Designed for the most demanding applications. Built for continuous high-volume production. Especially robust construction with double-sided roll mounting for a consistently linear press force.



## PP 175

Developed as a cost-efficient solution for compaction in the chemical industry. Closes the gap between the PP 150 C and PP 250 and is perfectly suited for medium to large production volumes.



- Modular design with 1 / 2 / 4 screws
- Crushing systems optionally available
- Separate customized controls
- Bearings on both sides
- Fences or stainless steel shrouds
- CVF extractable

Model	PP 175	PP 250	PP 350	PP 500
Roller diameter in mm	150	250	350	500
Roller width in mm	90 / 180 / 360	125 / 200 / 250 / 330 / 500	165 / 200 / 250 / 350 / 700	200 / 250 / 400 / 500 / 1.000 / 1.200
Continuous throughput capacity	up to 2.400 kg/h	up to 4.000 kg/h	up to 18.000 kg/h	up to 50.000 kg/h
Maximum linear compacting force	up to 26 kN/cm	up to 41 kN/cm	up to 55 kN/cm	up to 100 kN/cm
Weight (without control system)	1.500 kg	4.500 kg	8.000 kg	25.000 kg
Dimensions (H x W x D)	1.160 mm x 1.950 mm x 1.450 mm	1.500 mm x 3.200 mm x 2.350 mm	1.900 mm x 3.600 mm x 2.535 mm	3.760 mm x 5.000 mm x 3.400 mm
Control system	separate control cabinet	separate control cabinet	separate control cabinet	separate control cabinet

## SWITCHGEAR CONSTRUCTION THE HIGHEST QUALITY

[unitechnik.com](http://unitechnik.com)



**You make the impossible possible every day**

We provide you with the intelligence for your machine -  
compact in a control cabinet.

**UNITECHNIK SYSTEMS GMBH**  
Fritz-Kotz-Str. 14, 51674 Wiehl  
Fon: +49 2261 987 0  
[unitechnik.com](http://unitechnik.com)

**Unitechnik**  
PERFECTION AUTOMATED.

## Custom Solutions for Unique Requirements

Alexanderwerk's special Roller Compactors in the WP series are engineered for demanding, highly specific applications around the world. From fertilizers and minerals to battery mass production and nuclear technology, these roller compactors with double-sided bearings are individually designed and precisely dimensioned for each case.

Over the years, Alexanderwerk has delivered more than 120 customized configurations of the globally established WP 330 model for the silica industry alone. At the other end of the spectrum, our large-scale WP 750 and WP 1000 models achieve throughputs of several hundred tonnes per day – setting new benchmarks, for example, in the production of battery masses.

Alexanderwerk technology has enabled customers to implement some of the world's largest dry-

cell battery production lines, manufacturing over a million batteries daily. Other impressive installations include large-scale plants for processing heavy soda ash with capacities exceeding 600 t/day.

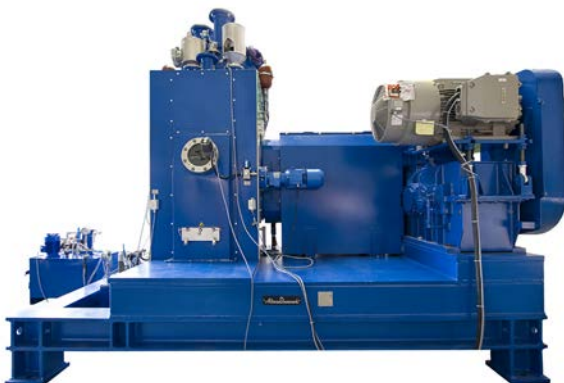
Each WP special machine represents our commitment to delivering reliable, high-performance solutions tailored precisely to our customers' needs – even for the most challenging industrial processes.



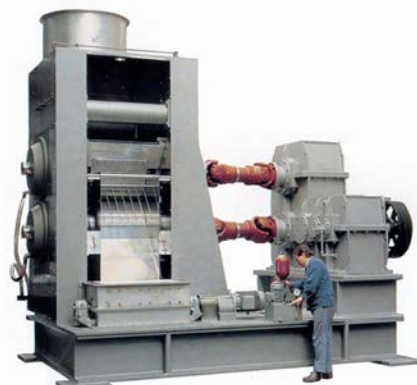
**WP 330** - The world leader in soda compaction



**WP 330 x 990**



**WP 480**



**WP 750 x 1000**

# High-Performance Fine Granulation

Our rotor fine granulators are universally applicable and deliver homogeneous particle shapes, high product purity and reproducible results – whether in the pharmaceutical, chemical or food industry.

## RFG 150 DA

High-performance rotor fine granulator developed for gentle granulation of dry or slightly moist products. As a plug-on module with integrated drive coupling, it is flexibly usable in the chemical, pharmaceutical and food industries as well as in life science and nuclear applications.

- Diagonal Design for more output and less fines
- Mesh sizes from 0.63 to 3.15 mm for variable granule sizes
- Modular system for fast tool changes and easy cleaning

Continuous throughput capacity	up to 600 kg/h
Weight	100 kg
Dimensions (H x W x D)	1.300 mm x 900 mm x 1.000 mm







Greetings & congratulations to Alexanderwerk GmbH on the occasion of the 140-year company anniversary.





## Rotor Fine Granulator Series RFG 250

The RFG 250 series was developed specifically for the requirements of the chemical, pharmaceutical and food industries, as well as for life science and civil nuclear applications. Designed for the precise granulation of dry or slightly moist products, these machines offer a finely graduated performance range through three different types.

- Modular design for fast tool changes and easy cleaning
- Ideal for chemical, pharmaceutical, food, life science and nuclear applications
- Quickly interchangeable sieve inserts (0.63–3.15 mm) for variable granule sizes

### RFG 250 D

Continuous throughput capacity	up to 1.500 kg/h
Weight	270 kg
Dimensions (H x W x D)	500 mm x 500 mm x 950 mm

### RFG 250 DL

Continuous throughput capacity	up to 3.000 kg/h
Weight	450 kg
Dimensions (H x W x D)	585 mm x 500 mm x 1.390 mm

### RFG 250 DDL

Continuous throughput capacity	up to 4.500 kg/h
Weight	450 kg
Dimensions (H x W x D)	580 mm x 500 mm x 1.630 mm



**LEADING TECHNOLOGY IN CONTAINMENT**

**ART**  
Anlagenbau Reinraum Technik

**CONGRATS ON YOUR COMPANY ANNIVERSARY**

**smART Protection**

Occupational   Environmental   Product

# Bechtle. IT that stays.

Your IT partner for today,  
tomorrow and the day after.



IT strategy  
with **future**.



Sustainable  
solutions for  
sustainable success.



Personal support  
instead of standard  
service.



360° IT solutions  
for **SMEs**.

We congratulate the Alexanderwerk  
dearly on its 140th anniversary -  
proudly at your side!





**RHEWUM®**

## Precision Screening Solutions

### ■ Exact Particle Separation

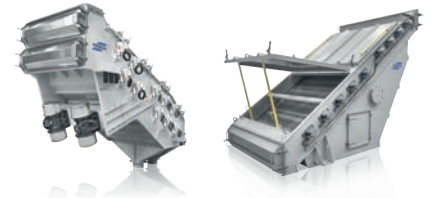
Achieve exact separations with clean, clump-free screening – no dust, no blinding, just consistent results.

### ■ Maximum Uptime, Minimal Effort

Enjoy stress-free operation thanks to low maintenance needs and high reliability to keep your line running smoothly.

### ■ Engineered & Built in Germany

Benefit from 80 years of in-house experience delivering energy-efficient, high-throughput machines made to last.



**150**  
Years



**KILIAN**  
Tableting Excellence

# Tableting Expertise since 1875



Innovative, reliable tableting equipment for every challenge,  
from research and development to high-performance production  
under the most demanding conditions.



[www.romaco.com](http://www.romaco.com)



**Wire EDM**  
Finest contours and maximum precision in the µm range

**Hole Drilling EDM**  
Precise starter holes from Ø 0.3 mm

**Die-Sinking EDM**  
Complex shapes through 5-axis machining

**Milling**  
Complementary machining for individual requirements

**Precision in Perfection – EDM Technology by Schönherr & Selbach**

For more than 40 years, Schönherr & Selbach has stood for ultimate precision in electrical discharge machining.

As experienced specialists, we provide customized solutions for complex requirements in metal processing.

**Schönherr & Selbach  
Erodiertechnik GmbH & Co. KG**

Großfeld 7  
42929 Wermelskirchen

02193 510911  
info@schoenherr-selbach.de  
www.schoenherr-selbach.de

# DAUMANN

## Druckluftdienst

☎ 0201 48 18 64

**Compressed air that performs – Service that convinces.**

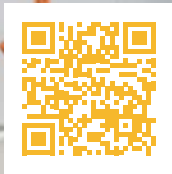
**Complete compressed air service –** from consulting to maintenance and repair

**Certified specialist company** for industry, trade, and commerce

**Fast support in case of malfunctions** thanks to our own emergency service and spare parts supply

**Focus on energy efficiency –** with modern systems and intelligent control technology

Dipl.-Ing. Arnd Daumann  
Nordsternstraße 65    Telefon: 0201 48 18 64  
45329 Essen            info@daumann-druckluftdienst.de



## The Flexible Path to the Right Solution

Not every process begins with an investment. That's why Alexanderwerk offers you the option to rent machines – simple, flexible and risk-free.

Whether for short-term bridging, testing new materials or as a starting point for long-term cooperation: our rental solutions provide security in selecting and using the right technology.

- Flexible entry without capital expenditure
- Realistic tests with your own products
- Fast availability for temporary needs
- Support from our application experts
- Ideal foundation for sound investment decisions

### Let's talk about your project!



**National Lab**

**No one can imitate these little ones!**

**ProfiCool**  
**Intelligent Water Chillers**  
**0.3 kW to 500 kW**

[www.nationallab.eu](http://www.nationallab.eu)      [ProfiCool@nationallab.com](mailto:ProfiCool@nationallab.com)

The advertisement features a blue background with a large, realistic dolphin leaping out of the water. In the foreground, a white National Lab ProfiCool water chiller unit is shown. To the right, two young children, a boy and a girl, are sitting on a smaller version of the ProfiCool unit. The boy is holding a small stuffed dolphin toy. The overall theme is reliability and quality, comparing the industrial equipment to the natural intelligence of a dolphin.

# Turnkey Solutions from a Single Source. Contact us for tailored solutions.

Alexanderwerk designs and implements complete systems for compaction and granulation – individually conceived, modularly constructed and delivered turnkey. We accompany you from the first idea to commissioning – with in-depth engineering, proven components and extensive process expertise.

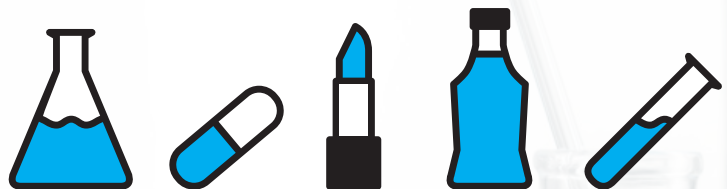
Our solutions are aimed at companies in the pharmaceutical, chemical and food industries that require scalable systems compliant with GMP or ATEX – reliable, efficient and precisely tailored to their applications.

- Custom plant concepts tailored to your needs
- Integration of all components: roller compactor, granulator, auxiliaries like screening machines or pneumatic conveyors, control system
- Fewer interfaces – one central point of contact
- Validated processes and GMP-compliant design
- Fast commissioning and reliable worldwide service



## ADAMS Industrievertretungen

Serving customers with passion



### Sales with added value. Consulting built on trust.

We connect you with the best suppliers for machinery, systems, and services – competent, reliable, and independent.

Benefit from our experience, verified partners, and genuine consulting that goes the extra mile.

**Because your success is our goal.**

### Our Partners

adams & öztas oHG

IPOS

Roland Maurer  
Industriemontage GmbH

STAS GmbH

## Innovation Through Research

At Alexanderwerk, we combine theory with practice to develop customized processes for compaction and granulation – practical, reliable and efficient.

At Alexanderwerk, we combine theory with practice to develop customized processes for compaction and granulation – practical, reliable and efficient.

Our dedicated research and development department continuously works on new solutions, processes and optimizations. This ensures you benefit from future-proof technologies – delivering real competitive advantages.

This dedication pays off: in 2013, the Alexanderwerk Group was included in the Lexicon of German Mechanical Engineering.

**“The Best of German Engineering”** showcases innovative companies from the core sector of the German Mittelstand.

With this recognition, Alexanderwerk joins the ranks of internationally leading German mechanical engineering companies.

Get in touch –  
we're here to help.



## Flexible. Scalable. Efficient.

Following successful feasibility studies in our technical center, Alexanderwerk offers the production of small to medium product batches as contract manufacturing:

### 01

#### Process Planning

Together we define quality requirements and review product-specific safety data sheets.

### 02

#### Fast Setup

Small to medium batches are produced reliably for you – efficiently and tailored to your needs.

### 03

#### Customized Offer

We will provide you with a tailored quotation – adapted to your project, time-flexible and solution-oriented.

*Alexanderwerk* &  Scholl

**Wir gratulieren zu 140 Jahren  
technologischer & unternehmerischer  
Exzellenz.**

DANKE für 20 Jahre Vertrauen, Partnerschaft &  
Zusammenhalt in bewegten Zeiten.

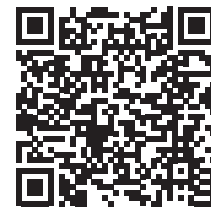
## Turning Your Idea into Reality

Our Laboratory (Technikum) combines scientific methodology with industrial application – a space where precise, practice-oriented technology is created.

We'll find the right solution together – contact us now.

### Precise Process Matching

At Alexanderwerk, we conduct extensive process and procedure trials to identify the exact machines that suit your product. With testing facilities available internationally – in Germany, the US and China – we develop solutions that meet your specifications precisely.



01

### Process parameters

We systematically analyze variables such as roll speed, press force, roll surface, gap width, vacuum level, granule size, particle size distribution and bulk density.

02

### Testing of processes and methods

We conduct trials with minimal material quantities to ensure both material and cost efficiency.

03

### Creation of DoE

Based on the test results, we develop a structured DoE to precisely achieve your process goals such as quality, throughput or efficiency.

## Service That Sets Standards

Reliable processes, maximum availability and consistently high product quality – that's what our customers expect. Our comprehensive after-sales service ensures that your machines perform at their best at all times.

### Maintenance & Calibration

Planning reliability starts with professional service: we take care of preventive maintenance and calibration of your systems – on time, well-documented and perfectly aligned with your operating schedule.

### Original Spare Parts – Rapid Availability

Only original parts guarantee the quality and longevity that Alexanderwerk stands for. Our central spare parts warehouse ensures fast delivery – worldwide and, if required, with on-site installation by our technicians.

### Technical Support – Personal & Competent

Our experienced service teams are here for you: by phone, via remote maintenance or directly on-site. Whether you need quick troubleshooting, technical advice or process optimization – we support you with expertise and commitment.



**burgsmüller**<sup>1876</sup>  
WEAR TECHNOLOGY

## Your expert for screw elements and vortex technology

- Screw elements, cylinders, and shafts for the highest demands
- Patented whirling technology for efficient production
- Custom-made spare and wear parts for extruders

**Burgsmüller GmbH**  
Schwammelwitzer Str. 17  
D-37574 Einbeck  
Phone: 05561 92505-0  
info@burgsmueller.de  
www.burgsmueller.de

## Contact Us

Let's optimize your processes together –  
we look forward to hearing from you.

### Alexanderwerk GmbH

Kippdorfstr. 6–24  
42857 Remscheid  
Germany

T: +49 2191 795-0

E: [contact@alexanderwerk.com](mailto:contact@alexanderwerk.com)

[www.alexanderwerk.com](http://www.alexanderwerk.com)



Print product with financial  
**climate contribution**

[ClimatePartner.com/10170-2509-1173](https://ClimatePartner.com/10170-2509-1173)